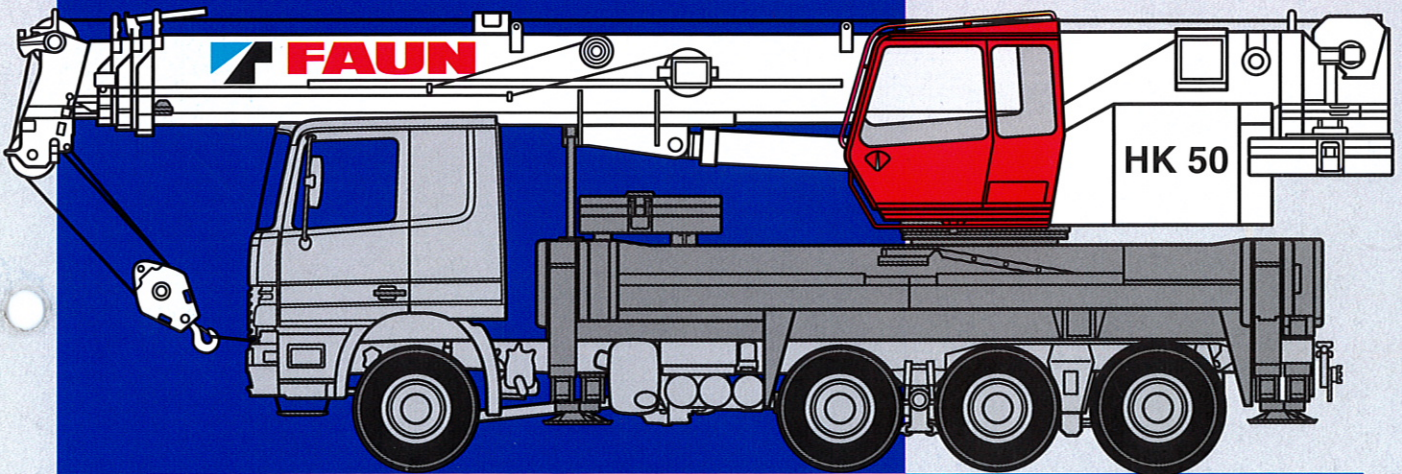
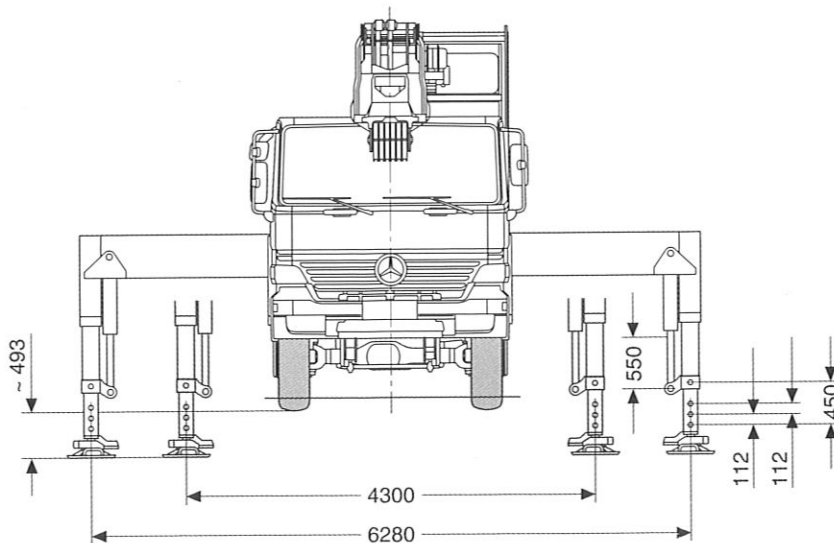
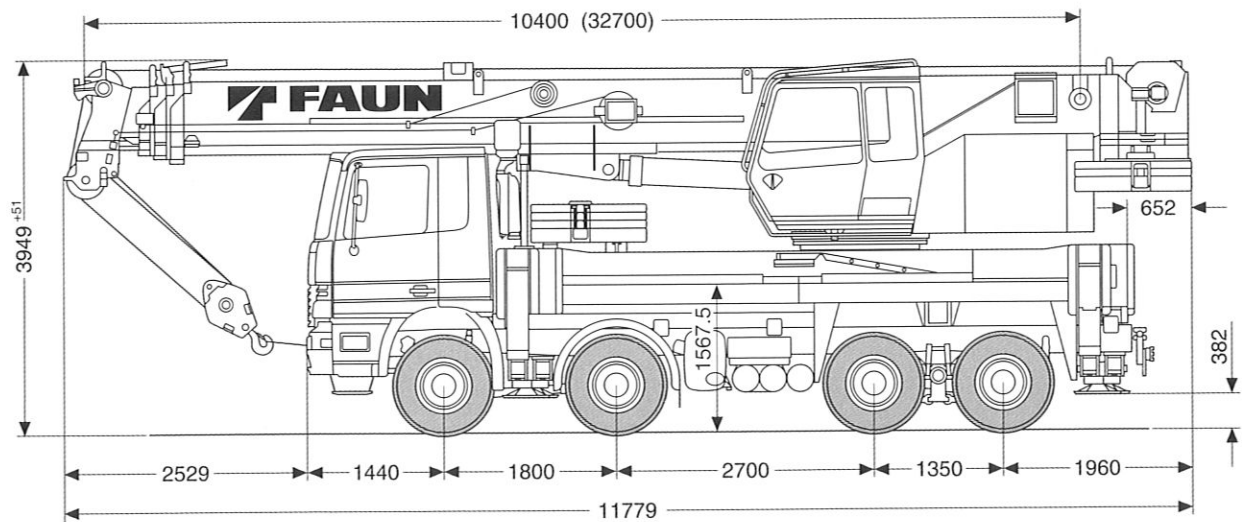
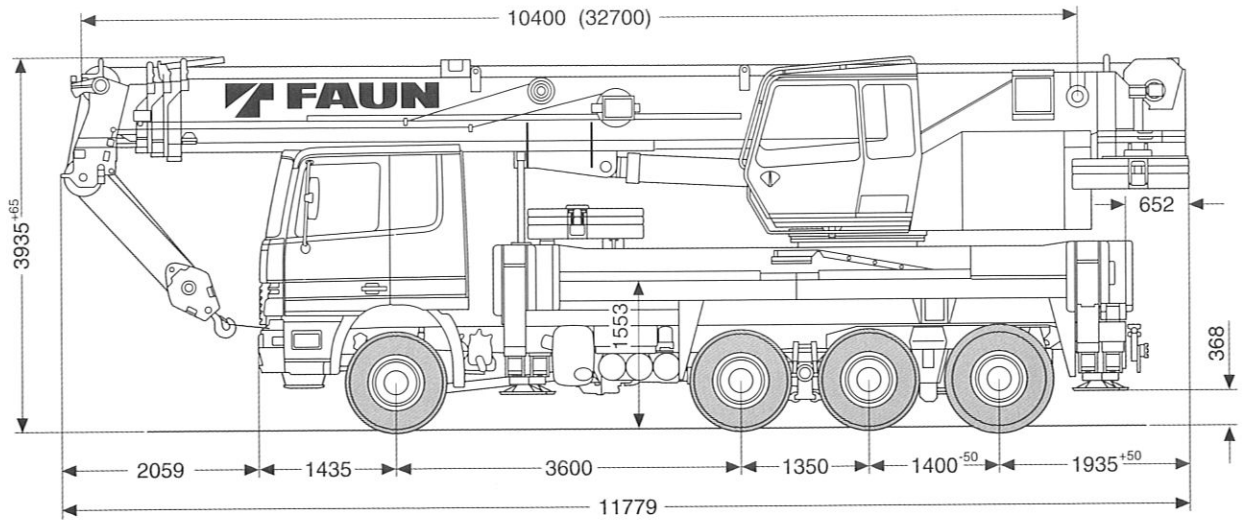


ISO 9001

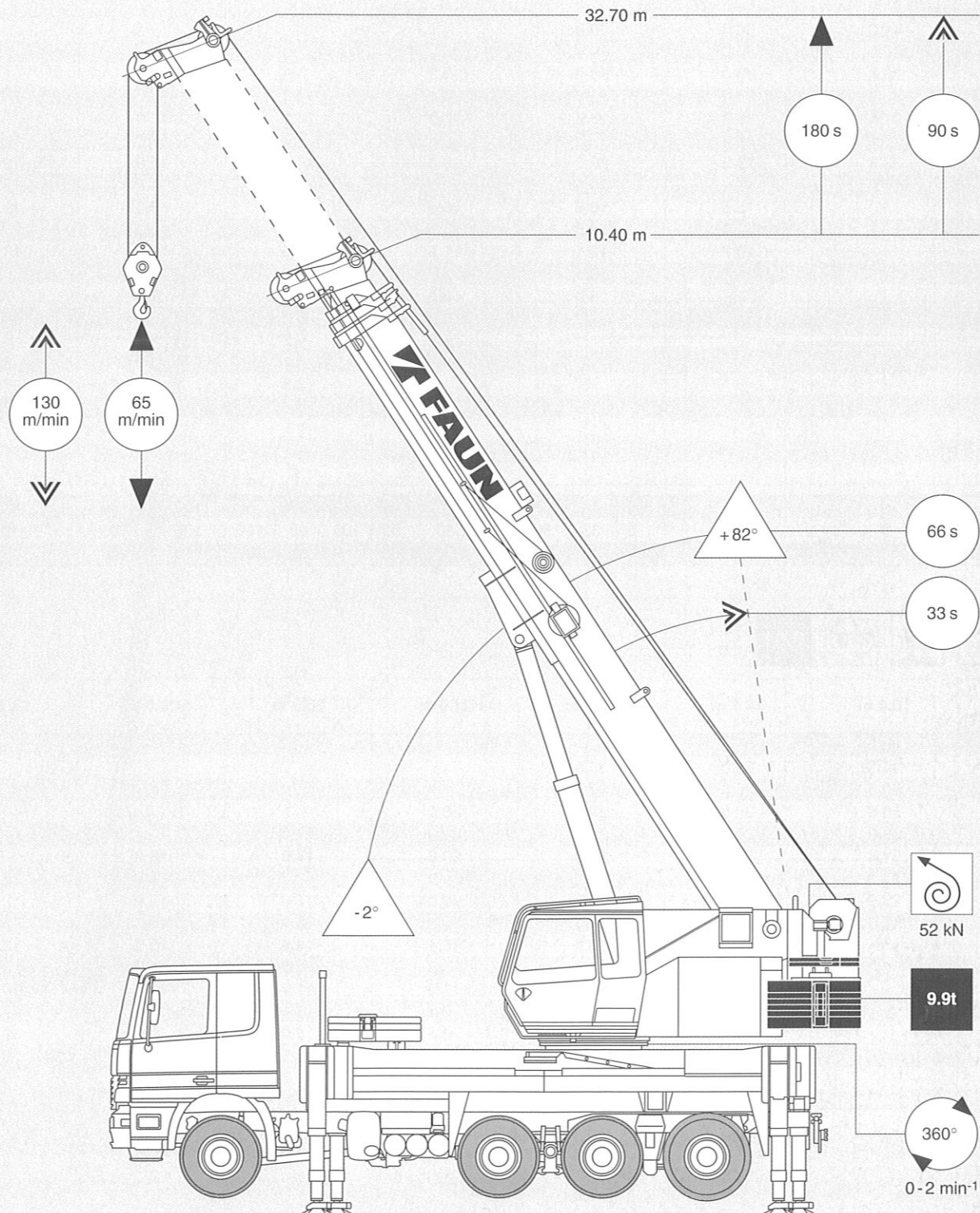
# HK 50



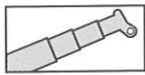
Maße / Dimensions (mm)  
 Gewichte / Weights  
 Geschwindigkeiten / Speeds



Standardausführung  
Standard Version



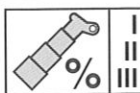
## Tragfähigkeiten am Teleskopausleger Lifting capacities on telescopic boom



9.9t

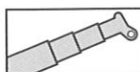
DIN

| m    | 10.4 m | 14.1 m | 17.8 m | 21.6 m | 25.3 m | 29.0 m | 32.7 m |
|------|--------|--------|--------|--------|--------|--------|--------|
| 2.5  | 50.0   |        |        |        |        |        |        |
| 3.0  | 44.3   | 30.0   | 30.0   |        |        |        |        |
| 3.5  | 40.2   | 30.0   | 30.0   |        |        |        |        |
| 4.0  | 36.8   | 30.0   | 30.0   | 20.0   |        |        |        |
| 4.5  | 33.9   | 30.0   | 29.1   | 20.0   | 17.0   |        |        |
| 5.0  | 31.4   | 30.0   | 26.8   | 20.0   | 17.0   | 16.0   |        |
| 6.0  | 27.2   | 26.8   | 23.2   | 20.0   | 17.0   | 16.0   | 12.0   |
| 7.0  | 23.9   | 23.5   | 20.3   | 20.0   | 17.0   | 15.9   | 12.0   |
| 8.0  | 17.0   | 19.0   | 20.0   | 19.8   | 16.3   | 14.7   | 12.0   |
| 9.0  |        | 15.5   | 16.9   | 16.4   | 14.6   | 13.3   | 12.0   |
| 10.0 |        | 12.8   | 14.3   | 13.7   | 13.2   | 12.3   | 11.1   |
| 11.0 |        | 10.7   | 12.1   | 11.5   | 11.5   | 11.3   | 10.2   |
| 12.0 |        |        | 10.4   | 9.9    | 9.9    | 10.2   | 9.3    |
| 14.0 |        |        | 8.0    | 8.2    | 7.7    | 7.8    | 7.4    |
| 16.0 |        |        |        | 6.5    | 6.5    | 6.1    | 5.8    |
| 18.0 |        |        |        | 5.3    | 5.2    | 4.9    | 4.5    |
| 20.0 |        |        |        |        | 4.3    | 3.9    | 3.6    |
| 22.0 |        |        |        |        | 3.5    | 3.2    | 2.9    |
| 24.0 |        |        |        |        |        | 2.6    | 2.3    |
| 26.0 |        |        |        |        |        | 2.1    | 1.8    |
| 28.0 |        |        |        |        |        |        | 1.4    |
| 30.0 |        |        |        |        |        |        | 1.0    |



I  
II  
III

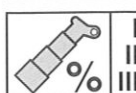
|   |    |     |    |    |     |    |     |     |    |     |     |     |     |
|---|----|-----|----|----|-----|----|-----|-----|----|-----|-----|-----|-----|
| 0 | 50 | 100 | 33 | 0  | 100 | 50 | 0   | 100 | 66 | 0   | 100 | 50  | 100 |
| 0 | 0  | 0   | 33 | 50 | 50  | 50 | 50  | 100 | 66 | 100 | 100 | 100 | 100 |
| 0 | 0  | 0   | 33 | 50 | 0   | 50 | 100 | 0   | 66 | 100 | 50  | 100 | 100 |



9.9t

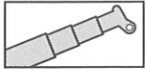
DIN

| m    | 10.4 m | 14.1 m | 17.8 m | 21.6 m | 25.3 m | 29.0 m | 32.7 m |
|------|--------|--------|--------|--------|--------|--------|--------|
| 2.5  | 50.0   |        |        |        |        |        |        |
| 3.0  | 44.3   | 30.0   | 30.0   |        |        |        |        |
| 3.5  | 40.2   | 30.0   | 30.0   |        |        |        |        |
| 4.0  | 36.8   | 30.0   | 30.0   | 20.0   |        |        |        |
| 4.5  | 33.9   | 30.0   | 29.1   | 20.0   | 17.0   |        |        |
| 5.0  | 31.4   | 30.0   | 26.8   | 20.0   | 17.0   | 16.0   |        |
| 6.0  | 27.2   | 26.8   | 23.2   | 20.0   | 17.0   | 16.0   | 12.0   |
| 7.0  | 23.9   | 23.5   | 20.3   | 20.0   | 17.0   | 15.9   | 12.0   |
| 8.0  | 17.0   | 19.0   | 20.0   | 19.8   | 16.3   | 14.7   | 12.0   |
| 9.0  |        | 15.6   | 16.9   | 16.4   | 14.6   | 13.3   | 12.0   |
| 10.0 |        | 13.1   | 14.3   | 13.8   | 13.2   | 12.3   | 11.1   |
| 11.0 |        | 11.2   | 12.4   | 11.9   | 11.9   | 11.3   | 10.2   |
| 12.0 |        |        | 10.8   | 10.4   | 10.4   | 10.4   | 9.3    |
| 14.0 |        |        | 8.5    | 8.4    | 8.0    | 8.3    | 7.9    |
| 16.0 |        |        |        | 7.1    | 6.7    | 6.7    | 6.4    |
| 18.0 |        |        |        | 5.8    | 5.8    | 5.4    | 5.1    |
| 20.0 |        |        |        |        | 4.8    | 4.5    | 4.2    |
| 22.0 |        |        |        |        | 4.1    | 3.7    | 3.4    |
| 24.0 |        |        |        |        |        | 3.1    | 2.8    |
| 26.0 |        |        |        |        |        | 2.5    | 2.3    |
| 28.0 |        |        |        |        |        |        | 1.8    |
| 30.0 |        |        |        |        |        |        | 1.4    |



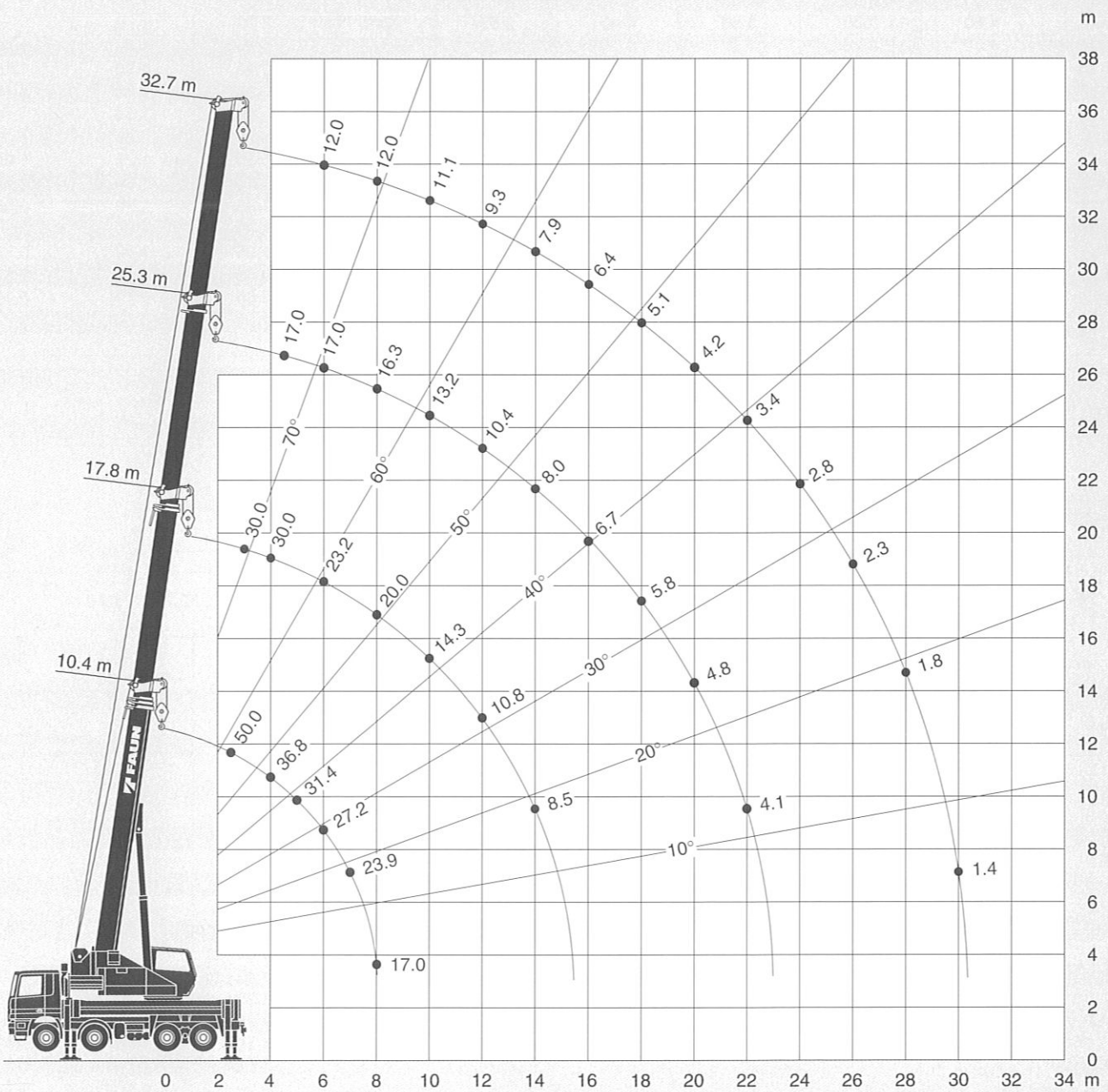
I  
II  
III

|   |    |     |    |    |     |    |     |     |    |     |     |     |     |
|---|----|-----|----|----|-----|----|-----|-----|----|-----|-----|-----|-----|
| 0 | 50 | 100 | 33 | 0  | 100 | 50 | 0   | 100 | 66 | 0   | 100 | 50  | 100 |
| 0 | 0  | 0   | 33 | 50 | 50  | 50 | 50  | 100 | 66 | 100 | 100 | 100 | 100 |
| 0 | 0  | 0   | 33 | 50 | 0   | 50 | 100 | 0   | 66 | 100 | 50  | 100 | 100 |

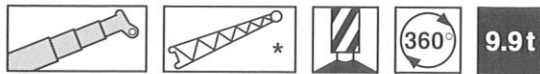


9.9t

DIN

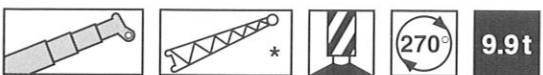


## Tragfähigkeiten an der Spitze\* Lifting capacities on boom extension\*



DIN

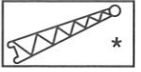
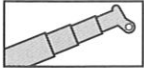
| m    | 29.0 m + 9.0 m |      |      | 32.7 m + 9.0 m |      |      | 32.7 m + 16.0 m |      |      |
|------|----------------|------|------|----------------|------|------|-----------------|------|------|
|      | 5°             | 17°  | 30°  | 5°             | 17°  | 30°  | 5°              | 17°  | 30°  |
| 8.0  | 6.00           |      |      | 5.00           |      |      |                 |      |      |
| 9.0  | 6.00           | 4.40 |      | 5.00           |      |      |                 |      |      |
| 10.0 | 6.00           | 4.40 | 2.80 | 5.00           | 4.00 |      | 3.00            |      |      |
| 11.0 | 5.65           | 4.20 | 2.75 | 4.85           | 3.90 |      | 2.90            |      |      |
| 12.0 | 5.35           | 4.00 | 2.65 | 4.70           | 3.80 | 2.80 | 2.85            | 1.90 |      |
| 14.0 | 4.60           | 3.55 | 2.50 | 4.45           | 3.55 | 2.65 | 2.70            | 1.90 |      |
| 16.0 | 4.00           | 3.20 | 2.40 | 4.15           | 3.35 | 2.45 | 2.55            | 1.80 | 1.20 |
| 18.0 | 3.55           | 2.90 | 2.25 | 3.85           | 3.10 | 2.35 | 2.40            | 1.70 | 1.15 |
| 20.0 | 3.15           | 2.70 | 2.10 | 3.45           | 2.85 | 2.20 | 2.10            | 1.60 | 1.15 |
| 22.0 | 2.85           | 2.50 | 2.00 | 3.05           | 2.65 | 2.10 | 1.90            | 1.50 | 1.10 |
| 24.0 | 2.35           | 2.30 | 1.90 | 2.45           | 2.45 | 2.00 | 1.75            | 1.35 | 1.05 |
| 26.0 | 1.85           | 1.95 | 1.85 | 1.90           | 2.05 | 1.90 | 1.60            | 1.25 | 1.00 |
| 28.0 | 1.40           | 1.50 | 1.55 | 1.50           | 1.60 | 1.70 | 1.45            | 1.20 | 0.95 |
| 30.0 | 1.05           | 1.10 | 1.15 | 1.15           | 1.20 | 1.30 | 1.35            | 1.10 | 0.95 |
| 32.0 | 0.75           | 0.75 | 0.75 | 0.80           | 0.90 | 0.95 | 1.25            | 1.05 | 0.90 |
| 34.0 | 0.45           | 0.45 | 0.40 | 0.55           | 0.60 | 0.60 | 1.05            | 1.00 | 0.85 |
| 36.0 |                |      |      |                |      |      | 0.80            | 0.95 | 0.85 |
| 38.0 |                |      |      |                |      |      | 0.60            | 0.70 | 0.75 |
| 40.0 |                |      |      |                |      |      |                 | 0.50 | 0.50 |
| 42.0 |                |      |      |                |      |      |                 |      |      |
|      | I              | 100  |      |                | 100  |      |                 | 100  |      |
|      | II             | 100  |      |                | 100  |      |                 | 100  |      |
|      | III            | 50   |      |                | 100  |      |                 | 100  |      |



DIN

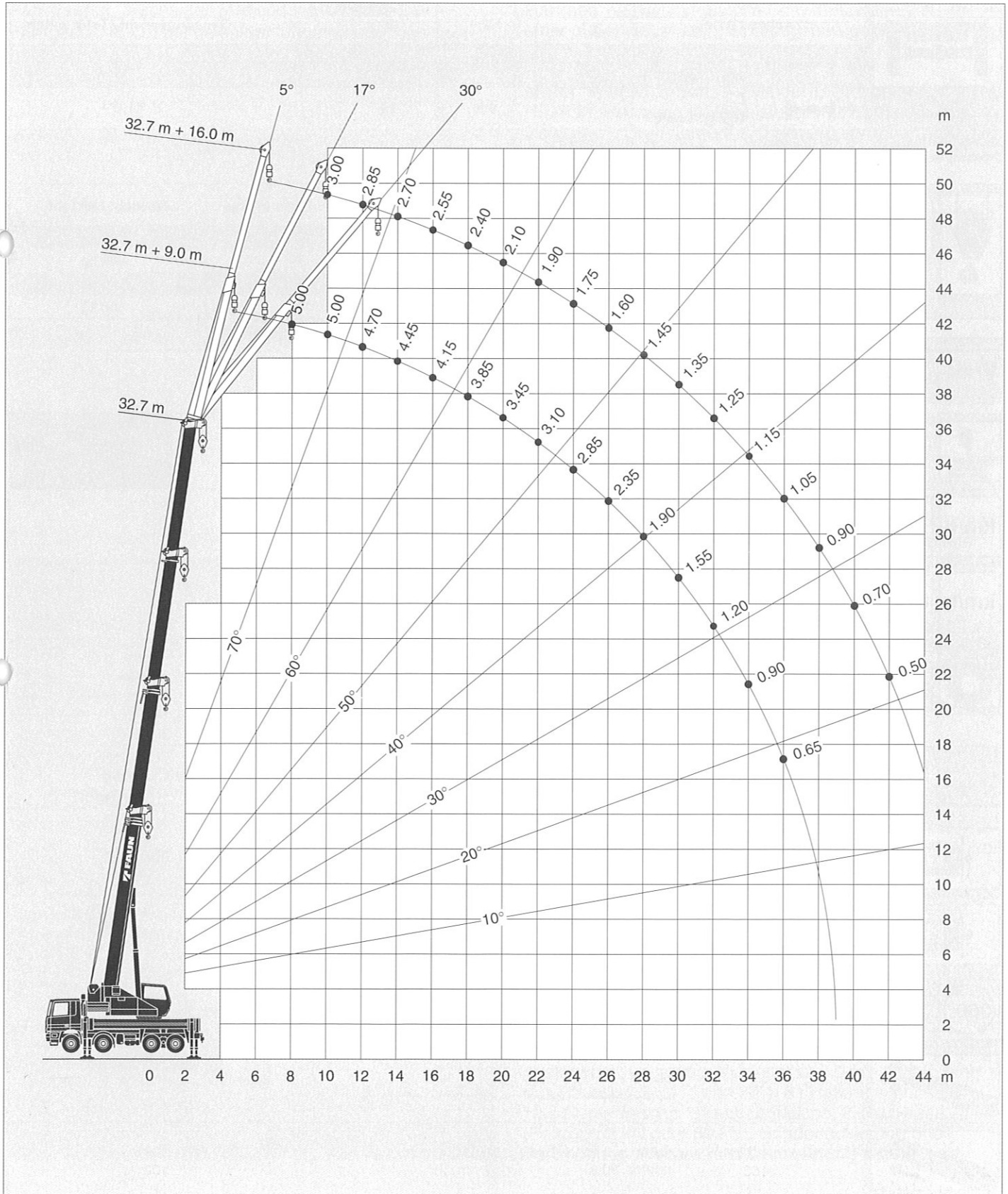
| m    | 29.0 m + 9.0 m |      |      | 32.7 m + 9.0 m |      |      | 32.7 m + 16.0 m |      |      |
|------|----------------|------|------|----------------|------|------|-----------------|------|------|
|      | 5°             | 17°  | 30°  | 5°             | 17°  | 30°  | 5°              | 17°  | 30°  |
| 8.0  | 6.00           |      |      | 5.00           |      |      |                 |      |      |
| 9.0  | 6.00           | 4.40 |      | 5.00           |      |      |                 |      |      |
| 10.0 | 6.00           | 4.40 | 2.80 | 5.00           | 4.00 |      | 3.00            |      |      |
| 11.0 | 5.65           | 4.20 | 2.75 | 4.85           | 3.90 |      | 2.90            |      |      |
| 12.0 | 5.35           | 4.00 | 2.65 | 4.70           | 3.80 | 2.80 | 2.85            | 1.90 |      |
| 14.0 | 4.60           | 3.55 | 2.50 | 4.45           | 3.55 | 2.65 | 2.70            | 1.90 |      |
| 16.0 | 4.00           | 3.20 | 2.40 | 4.15           | 3.35 | 2.45 | 2.55            | 1.80 | 1.20 |
| 18.0 | 3.55           | 2.90 | 2.25 | 3.85           | 3.10 | 2.35 | 2.40            | 1.70 | 1.15 |
| 20.0 | 3.15           | 2.70 | 2.10 | 3.45           | 2.85 | 2.20 | 2.10            | 1.60 | 1.15 |
| 22.0 | 2.85           | 2.50 | 2.00 | 3.10           | 2.65 | 2.10 | 1.90            | 1.50 | 1.10 |
| 24.0 | 2.60           | 2.30 | 1.90 | 2.85           | 2.45 | 2.00 | 1.75            | 1.35 | 1.05 |
| 26.0 | 2.30           | 2.15 | 1.85 | 2.35           | 2.30 | 1.90 | 1.60            | 1.25 | 1.00 |
| 28.0 | 1.85           | 1.90 | 1.80 | 1.90           | 2.00 | 1.85 | 1.45            | 1.20 | 0.95 |
| 30.0 | 1.45           | 1.50 | 1.55 | 1.55           | 1.60 | 1.70 | 1.35            | 1.10 | 0.95 |
| 32.0 | 1.10           | 1.15 | 1.15 | 1.20           | 1.25 | 1.30 | 1.25            | 1.05 | 0.90 |
| 34.0 | 0.80           | 0.75 | 0.75 | 0.90           | 0.95 | 0.95 | 1.15            | 1.00 | 0.85 |
| 36.0 |                |      |      | 0.65           | 0.65 | 0.65 | 1.05            | 0.95 | 0.85 |
| 38.0 |                |      |      |                |      |      | 0.90            | 0.90 | 0.80 |
| 40.0 |                |      |      |                |      |      | 0.70            | 0.80 | 0.80 |
| 42.0 |                |      |      |                |      |      | 0.50            | 0.55 | 0.55 |
|      | I              | 100  |      |                | 100  |      |                 | 100  |      |
|      | II             | 100  |      |                | 100  |      |                 | 100  |      |
|      | III            | 50   |      |                | 100  |      |                 | 100  |      |

Hubhöhen  
Lifting heights



9.9t

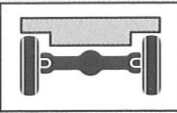


DIN



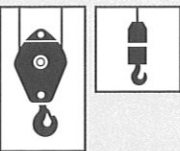
\*) Gegen Mehrpreis

\*) Against extra charge

## Gewichte / Geschwindigkeiten Weights / Working speeds

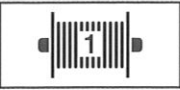


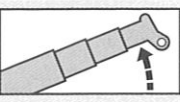
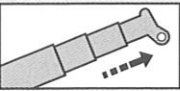
|          | Achse / Axle   | 1   | 2    | 3    | 4     | Gesamtgewicht / Total weight |
|--|--|-----|------|------|-------|------------------------------|
|  | 3-  (t) | 8.8 | 11.8 | 11.8 | 10.5  | 42.9*                        |
| 4-  (t) | 8.8  | 8.8 | 12   | 12   | 41.6* |                              |

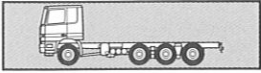
\* Abhängig vom Fahrgestell, incl. 9,9 t Gegengewicht, 12,5 t Hakenflasche, 6 t Hakengeschirr.  
\* Depending on chassis, incl. 9.9 t counterweight, 12.5 t hook block, 6 t swivel hook.

|  | Traglast / Lifting capacity | Rollen / Sheaves | Stränge / Parts of line | Gewicht / Weight |
|--|-----------------------------|------------------|-------------------------|------------------|
|  | 50 t                        | 6                | 12                      | 600 kg           |
| 32 t   | 3                           | 7                | 300 kg                  |                  |
| 12.5 t   | 1                           | 3                | 170 kg                  |                  |
| 6 t  | -                           | 1                | 150 kg                  |                  |

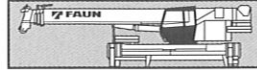


|  |   |  |  |  |  |  |   |
|--|---|--|--|--|--|--|---|
|        |   |  |  |  |  |  |  |
| km/h  | Alle diese Daten abhängig vom Fahrgestell<br>This data depending on chassis |  |  |  |  |  |   |
| km/h  |   |  |  |  |  |  |   |
|        |   |  |  |  |  |  |   |

| V+  | Stufenlos<br>Infinitely variable                     | Seil<br>Rope  | Max. Seilzug<br>Max. single line pull |
|--|--|---------------|---------------------------------------|
|      | 0 - 130 m/min<br>für einfachen Strang<br>single line | 16 mm / 180 m | 52 kN                                 |
|      | 0 - 70 m/min<br>für einfachen Strang<br>single line  | 14 mm / 140 m | 39 kN                                 |
|      | 0 - 2 min <sup>-1</sup>                              |               |                                       |
|      | -2° - +82°<br>ca. 33 s<br>approx. 33 s               |               |                                       |
|      | 10.4 m - 32.7 m<br>ca. 90 s<br>approx. 90 s          |               |                                       |



**Fahrgestell** 3-achsiges MAN oder Mercedes-Benz-Fahrgestell (6 x 6) mit gelenkter luftgefederter Nachlaufachse oder 4-achsiges Mercedes-Benz-Fahrgestell (8 x 4).



**Rahmen** Verwindungssteife Schweißkonstruktion mit einer außenverzahnten, einreihigen Kugeldrehverbindung, um 360° unbegrenzt drehbar.

**Motor** Mercedes-Benz 4-Zylinder-Dieselmotor OM 904 LA (Euro 2), wassergekühlt, Leistung 90 kW (122 PS) bei 2300 min<sup>-1</sup>. Drehmoment 470 Nm (48 kpm) bei 1200 min<sup>-1</sup>. (DIN 6270B / DIN 6271). Kraftstoffbehälter 200 l.

**Hydraulik System** Diesel-hydraulisch mit 3-Kreis-hydraulik, 1 leistungsgeregelte Axialkolbendoppelpumpe (hydraulisch verstellbar) und 1 zweifach Zahnradpumpe für Drehwerk und Steuerölversorgung.

**Steuerung** Zwei 4-fach Kreuzsteuerhebel mit hydraulischer Vorsteuerung.

**Teleskopausleger** Vierteiliger, kastenförmiger Teleskopausleger, bestehend aus einem Grundausleger und 3 Teleskopteilen, hydraulisch unter Teillast teleskopierbar. 10,4 m - 32,7 m lang.

**Wippwerk** Ein Differentialzylinder mit angebautem Senk-bremsperrventil.

**Hubwerk** Axialkolben-Konstant-Motor, Hubwerkstrommel mit eingebautem Planetengetriebe und federbelasteter Hydro-Lamellenbremse mit integriertem Freilauf beim Heben. Hubseil mit "Superstop"-Einrichtung.

**Drehwerk** Konstant-Motor, zweistufiges Planetengetriebe mit fußbetätigter Betriebsbremse und Feststellung. Drehgeschwindigkeit stufenlos von 0 - 2,0 min<sup>-1</sup>.

**Gegengewicht** Gesamtgewicht 10,2 t bzw. 9,9 t je nach Fahrgestelltyp.

**Oberwagenkabine** Großräumige Krankabine in Stahlblechausführung mit Sicherheitsverglasung mit getönten Scheiben, verstellbarem hydraulisch gedämpftem Fahrersitz, motorabhängige Warmwasserheizung und motorunabhängige Zusatzheizung mit Motorvorwärmung, Kontroll- und Bedienelemente für Kranbetrieb.

**Elektrische Anlage** 24 Volt-Gleichstrom, 2 Batterien.

**Sicherheitseinrichtungen** Lastmomentbegrenzung (LMB), Hubendschalter, Windenendschalter, Seilwindendrehmelder, Sicherheitsventile gegen Rohr- und Schlauchbrüche. Sperrventile an Hydraulik-Zylindern.

**Zusatzausrüstung** (gegen Mehrpreis)  
Auslegerverlängerung: Klappspitze 9,0 m - 16,0 m lang (abwinkelbar 5°, 17° und 30°), 6 t Hakengeschild, 12,5 t Unterflasche, 32 t Unterflasche, 2. Hubwinde (Seilzug 52 kN oder 39 kN), Sonderlackierung und Beschriftung. Weitere Zusatzausrüstung auf Anfrage.

## Anmerkungen zu den Traglasttabellen

Die Tragfähigkeiten im Festigkeitsbereich basieren auf DIN 15018 Blatt 2 und Blatt 3 und F.E.M.

Die Tragfähigkeiten im Standsicherheitsbereich entsprechen DIN 15019 Teil 2 / ISO 4305.

Die zulässige Windgeschwindigkeit beträgt maximal 15 m/sec.

Die Tragfähigkeiten sind in metrischen Tonnen angegeben.

Das Gewicht des Lasthakens bzw. der Hakenflasche und weiterer Anschlagmittel ist von der Tragfähigkeit abzuziehen.

Die Tragfähigkeiten für den Teleskopausleger gelten nur bei demonstrierter Spitze.

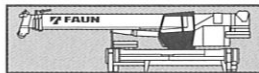
Die Ausladung ist der horizontale Abstand von Mitte Drehkranz bis Mitte freihängender, nicht schwingender Last.

Tragfähigkeitsänderungen vorbehalten.

Obige Angaben dienen nur zur Information. Die Bedienungsanleitungen müssen zu Rate gezogen werden, bevor die Maschine in Betrieb genommen wird. Alle hier gemachten Angaben beziehen sich auf die Standard-Ausführung. Jegliche Ausrüstungsveränderungen können die angegebenen Werte beeinflussen.



**Chassis** 3 axle MAN or Mercedes-Benz chassis (6 x 6) with steered rear tag-axle with air suspension or 4 axle Mercedes-Benz chassis (8 x 4).



**Frame** Torsion-resistant, all-welded structure of high strength steel. Connected to carrier by single-row ball-bearing slewing ring with external gearing for 360° continuous rotation.

**Engine** Mercedes-Benz 4 cylinder model OM 904 LA (Euro 2), water-cooled diesel engine. Rated at 90 kW (122 HP) at 2300 rpm. Torque 470 Nm (48 kpm) at 1200 rpm (according to DIN 6270B/DIN6271). Fuel tank capacity 200 liters.

**Hydraulic system** Three circuit diesel hydraulic system with 1 powercontrolled axial piston double pump (hydraulically adjustable) and 1 double gear pump for swing and pilot controls.

**Controls** Hydraulic, 2 joy-stick levers for simultaneous operation of crane motions.

**Telescopic boom** 4 section box type construction of high tensile, fine-grained steel, consisting of 1 base section and 3 telescoping sections. All telescope sections extendable under partial load. 10.4 m to 32.7 m long.

**Derricking system** 1 double acting hydraulic cylinder with integral brake and holding valve.

**Main winch** Axial piston constant displacement motor, winch drum with integrated planetary reduction and with hydraulically controlled spring-loaded, multiple disc brake and with integrated free rotation (no sagging of load when hoisting). Hoist cable with "Superstop" easy reeving system.

**Slewing system** Constant displacement motor with two-stage planetary reduction with a foot actuated service and a parking brake. Speed infinitely variable 0 - 2.0 rpm.

**Counterweight** Standard 10.2 t or 9.9 t depending on type of chassis.

**Superstructure cab** Spacious all-steel panoramic cab with safety (tinted) glass windows, hydraulically-cushioned adjustable seat, engine dependent hot water heater and additional engine independent hot water heater with engine pre-heat. Complete controls and instrumentation for crane operation.

**Electrical system** 24 volt DC system, 2 batteries.

**Safety devices** Load moment device (LMD), hoist limit switch, lower limit switch, drum turn indicator, safety valves against pipe and hose rupture, holding valves on hydraulic cylinders.

**Optional Equipment** (at extra charge)  
Lattice boom extension 9.0 m-16.0 m long (offsets 5°, 17° and 30°), 6 t headache ball, 12.5 t hook block, 32 t hook block, auxiliary winch (line pull 52 kN or 39 kN), special painting and lettering. Further optional equipment available upon request.

## Remarks concerning the load charts

*The lifting capacities in the structural area are based on DIN 15018 parts 2 and 3 and F.E.M.*

*The lifting capacities in the stability area are based on DIN 15019 part 2 / ISO 4305.*

*The maximum permissible wind speed for crane operation is 15 m/sec.*

*The lifting capacities shown are in metric tons.*

*The weight of load handling devices such as hook blocks, slings, etc., must be considered as part of the load and must be deducted from the lifting capacities.*

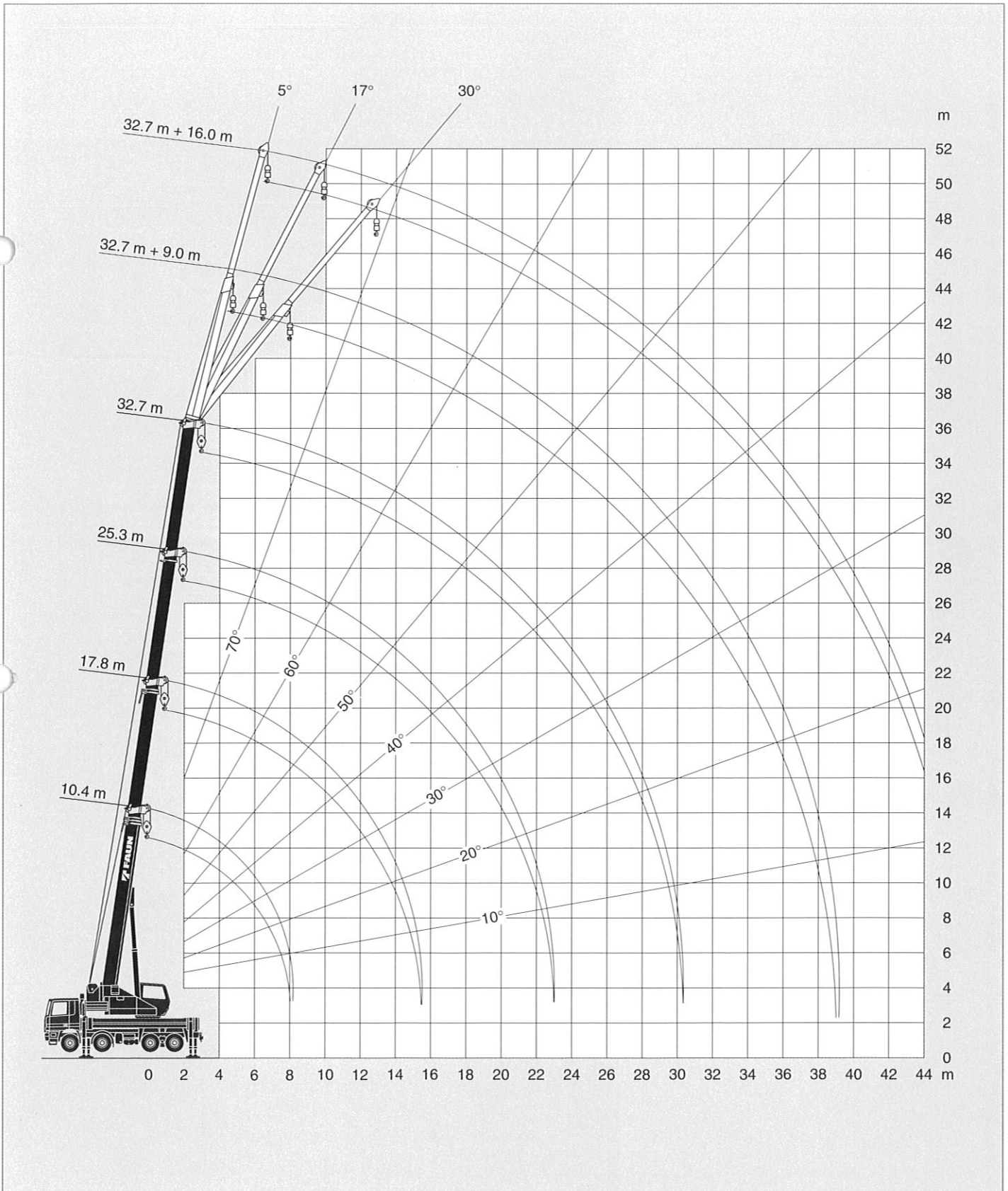
*The lifting capacities for the telescopic boom apply to a crane with no boom extensions being stowed or mounted on the crane.*

*The working radius is the horizontal distance from the centre of rotation to the centre of the freely suspended non-oscillating load.*










*The lifting capacities are subject to change without prior notice.*

*The above remarks are for basic information only and the operator's manual must be consulted before operating this crane. All data and performances refer to the standard crane. The addition of optional and other equipment may affect the performance of the crane.*

Hakenhöhen / Kopfhöhen  
Hook height / Tip height



# 24

|   |   |           |           |          |
|---|---|-----------|-----------|----------|
|    |  <b>SERVICE</b> →  |           |           |          |
|   | (0) 91 23 95 50    |           |           |          |
|   | (0) 17 18 11 43 24    |           |           |          |
|  | (0) 91 23 18 51 55  |           |           |          |
|   | (0) 91 23 18 52 19  |           |           |          |
|   | (0) 91 23 30 85   |           |           |          |
|  | Service + Spare parts   |           |           |          |
|   | e-mail: <a href="mailto:service@tadanofaun.de">service@tadanofaun.de</a>  |           |           |          |
|   | e-mail: <a href="mailto:spareparts@tadanofaun.de">spareparts@tadanofaun.de</a>  |           |           |          |
|  | <b>D</b> → <b>00 49</b>   |           |           |          |
| <b>A</b>  | <b>B</b>  | <b>CH</b> | <b>DK</b> | <b>F</b> |
| <b>GB</b>   | <b>I</b>  | <b>N</b>  | <b>NL</b> | <b>P</b> |
| <b>E</b>  | 07 49   | <b>S</b>  | 00 949    |          |